

SEARCHERS BOARD OFFICERS

- President: Monica Dekany-Beeker
- 1st VP: Heather Jackels
- 2nd VP: Lydia Pattison
- Director: Doug Flaugh
- Secretary: Jamie Cassidy -Curtis
- Treasurer: Charlotte Spalding
- Federation Delegate: Nancy Bird
- Committee Chairpersons
- Editor: Linda Horn
- Historian:
- Hospitality:
- Library Membership:
- Monthly Drawing:
- Sunshine:
- Veteran Liaison : Heather Jackel
- Website: Steve Duncan
- Workshop: Adrian Callard

IN THIS ISSUE

- | | |
|--------------------|---|
| Field Trips | 3 |
| Club Meetings | 2 |
| Upcoming CFM Shows | 5 |

POINTS OF INTEREST

FIELD TRIPS

GENERAL MEETING

SPEAKERS

The Rock Slab News

The Searchers Gem & Mineral Society, Australia C.A.

VOLUME 56, ISSUE 5



MAY 2019

The President's Message

Dear SEARCHERS

Dear Searchers-

The time is here for our annual show and I'm looking forward to seeing all of you there. I'm sure it will be a great success, the committee and show chair have been working very hard to put it all together.

The workshop has seen an increase in participation, it's wonderful to see all the creative projects our members are working on. Please make time to stop by and visit and check it out for yourself.

Keep donating slabs to the VA, share your rockhounding stories, and continue to spread the word about how amazing Searchers is!

Thanks for your continued support!

Sincerely,

Monica Dekany-Beeker

2019 President



Fun at the Searchers Lapidary shop



Searchers Club Meetings and Presenters

Board Meeting- Tues. May 7th at 6pm, Anaheim Community Center

Member Meeting- Tuesday May 14th at 7pm, Anaheim Community Center

WOOD

You join us for the Searchers May Meeting?...

Walton Wright will be our expert guest, educating us on petrified wood, its formation, and identification.

Mr. Wright is the foremost authority on the identification of petrified wood in the United States. He is a botanist, ecologist, geologist, and paleobiologist. He has worked as a field guide, educator, consultant to educational institutions, as well as consultant to government entities including the U.S. Forest Service

Mr. Wright has spoken at talks and seminars around the globe. He has travelled the U.S. as well as Australia, China, Indonesia, New Zealand, and South Africa searching for petrified wood. His personal collection has been estimated at over 10,000 pieces. It is possibly the largest collection in the world, rivaling, if not surpassing, those of museums or universities.

He has come to study paleobotany as a botanist, looking at fossil plants from the same perspective he would today's living plants, but framing that view in the context of geologic time, plate tectonics, adaptation, survival, and extinction.

Under certain conditions, ancient trees which were covered with volcanic ash or sediment for millions of years may fossilize into petrified wood. This slow process of mineralization can preserve the natural wood features and in fact develop a rare new beauty of color and pattern. Polished wood is displayed as art, made into fine decorator items and, as we lapidaries know well, can be shaped and polished into beautiful cabochons and jewelry pieces.

After the formal portion of the evening there will be an opportunity to interact with Mr. Wright. Please feel free to bring any specimens of your own that you would like help identifying or have questions about. He has agreed to examine them in order to learn new information including their age and origin.

What an opportunity. You won't want to miss this!



Remember to bring a rock or slab for the Vets!

Field Trips

May Field Trip 5/18/19 & 5/19/19

Clear Creek Management Area Field Trip

(Leaders: Andrew Bloxom (571-217-9536) andrewbloxom@gmail.com, and Jimmie Peterson)

Background

Hobby gem and mineral collectors are drawn to the Clear Creek areas by the presence of over 150 semi-precious mineral and gemstones. One of the most highly mineralized areas in California. The serpentine mass contains two superfund sites, Atlas Mine and Johns-Mansville. Both were associated with the mining and processing of chrysotile asbestos. Other minerals mined from the serpentine mass included cinnabar, chromite, magnesite, and jadeite. The Gem mine (private) located within the serpentine mass is the only source of gem-grade benitoite in the world. They have a fee dig in the tailings if you are interested, but we will not be going on the trip. The rare minerals neptunite and joaquinite have also been found there. Other cool things to hound are jaspers, uvarovite, and plasma agate.

We'll do a combination of digging for plasma agate and scouring the stream beds for interesting finds. You can't be disappointed in such a geologically diverse place!

Directions

I recommend using the "download offline maps" feature for Google Maps or your own selection of GPS App which allows off grid maps. There isn't much for cell service in the area.

Coming North on I-5:

Take exit 325 for Jayne Ave (Rt 33) and go west toward Coalinga

Jayne Ave turns into Polk St thru the town of Coalinga and then turns back into Jayne Ave

Continue on Jayne Ave and it make a big right sweeping turn and turns in S Derrick Ave and you are in the middle of the Chevron Oil Field, go ~4miles

Turn left onto Lost Gatos Creek Rd. Follow for 21.5mi, turns into Coalinga Rd at the Condon Peak Recreation Area.

Continue another 8.6mi and turn right onto Clear Creek Rd (LOOK FOR SEARCHERS SIGN)

Pass over the Ford in the San Benito River (it should be low enough for Subaru type vehicles, it's mor e a creek typically)

Travel about 1.5 miles to Oak Flat Campground on the left, SEARCHERS signs will be posted

Permits

Get your permits ahead of time by visiting the follow site, each car needs a general access permit to CCMA and a special permit for the Serpentine Area (ACEC).

<https://www.recreation.gov/vehiclepermits/>

The website will ask you three questions about our usage at CCMA, the answers are 1)yes, 2) yes, 3)no

Weekend Permits

I will send an email as well with the code to the gate but you can get it yourself by following instruction below:

If you are purchasing a permit for the weekend, it is necessary to call during our normal business hours, Monday – Friday, 7:30 a.m. to 4:00 p.m. at (831) 582-2200 for the combination to the entrance gate to Clear Creek ACEC area.

Maps and Info

<https://www.blm.gov/programs/recreation/permits-and-passes/lotteries-and-permit-systems/california/clear-creek-management-area>



For field trip
information
contact:
Lydia
Pattison Field
Trips,
Searchers
Gem and
Mineral
Society,
[lpattison@so
cal.rr.com](mailto:lpattison@so
cal.rr.com)

June Field Trip - Himalaya Mine Tourmaline

Date: 6/23/19 Sunday

Time: 10:00 am to 3:00 pm. Please arrive promptly at 10 so we can count attendees and get the best discount possible.

Leader: Lydia Pattison (714)453-8186

Details: The Himalaya Mine is giving us a great deal. The regular admission fee is \$75. If we have 20 attendees it is \$60 and if we have 30 attendees it will only be \$50.

Tools are provided.

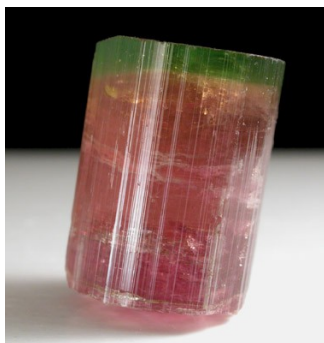
Bring 5 gal buckets.

We can bring easy-up shade, but be prepared to share.

Under 12 years is free.

Bring your own lunch and plenty to drink.

Follow the instructions on the flyer below.



Enjoy an entertaining and fun packed gemstone dig for beautiful tourmalines and other pegmatite crystals from the Mesa Grande Pegmatite District, near the scenic Lake Henshaw. (Approx. 1.5 hours NE of San Diego)
All tools are provided at no extra charge!

For gate code to access Gem Dig thru campground:
Lake Henshaw Resort
26439 Hwy 76, Santa Ysabel, CA 92070

Please Visit Our Website:
www.highdesertgemsandminerals.com

Or Call/Text:
(775) 772-7724 or (775) 225-4245 or (775) 830-5797

Diggers can also enjoy camping, cabins, and restaurant accommodations at Lake Henshaw Resort (please call 760-782-3501 for more information)



The Searchers

Gem and Mineral Society

Logo Contest Submission

- Submission Deadline: **June 1st**
 - Submit by e-mail only: LPATTISON@SOCAL.RR.COM
 - Subject Line: Searcher's Contest
 - Attach document to e-mail
 - You may submit 2 logos
-
- Each person will receive a prize for their submission.
 - The board will choose the top 5 submissions.
 - Each person in the top 5 will receive a prize
 - The top 5 plus the current logo will be presented at the June general meeting for a membership vote.
 - The winner will receive the grand prize. (Unless, of course) the current logo is the winner.)

Name: _____

Phone: _____

E-Mail: _____

Searcher Show News

60th Annual Anaheim Searchers Gem and Mineral Society Club Show

May 4, 2019, 10 a.m.-5 p.m.

May 5, 2019, 10 a.m.-4:30 p.m.

Brookhurst Community Center

2271 Crescent Ave, Anaheim, CA 92801

www.searchersrocks.org

We have an annual show the first weekend in May at the Brookhurst Community Center in Anaheim that promotes rocks, gems, minerals and geology. This is one of the best shows in Southern California among the CFMS clubs. Our show is free, with free parking, and we like to provide activities for children include a wheel of fortune, grab bags, a treasure hunt with dinosaur stamps, ring making, and Minor Miner. We have a variety of rock, gem and mineral-related dealers, and skilled demonstrators showing lapidary, intarsia, faceting, scrimshaw, carving and jewelry techniques. Everyone loves our silent auction where they can buy quality rocks, minerals and fossils, rough, slabs, fossils, and other materials for low prices. Our silent auction will feature quality rocks, minerals and fossils, a completely refurbished slabbing saw, and a small tumbler. Our raffle prizes include a sphere from popular Jim Peterson, a replica 10x12 inch fish fossil, a reciprocal lap, a small Campo del Cielo meteor, a beautiful specimen of botryoidal hematite, a cross necklace with diamonds, an over-the-shoulder-boulder holder (1-4 people can carry a heavy rock), a pressure wax injector (for people making lost wax castings) and a vulcanizer for making re-usable rubber molds for casting. We offer regular rock-related door prizes throughout the day. Everyone is welcome!

How Can You Help the Show?

Here are some ways you can help the Searcher's annual fundraiser:

Help set up Friday 8-12.

Sign up to help. We always need help in the Kitchen and with Security. We also have sit down jobs. It is a lot of fun and a great way to make friends!

Donate baked goods (cookies, bars, and other easy, non-messy, hand-held items. We can cut and plate them.)

Loan us your canopy for the lunch tables (marked with your name, including the storage bag)

Help tear down, Sunday 5-7 p.m. Bring your strong relatives and friends!

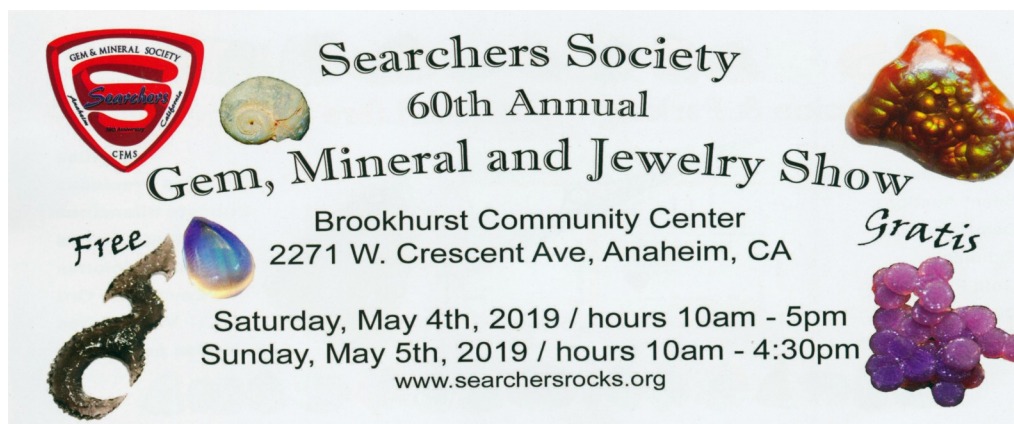
Donate prizes for children and adults, or silent auction materials. Time to clean out your stash and put it to good use!

Sign up for a display case: We have one more case to lend and space for one more case.

Loan us your lapidary creations for either the workshop display cases or the Searchers club case.

Tell your friends about the show.

Come and go shopping! You won't be disappointed!



Searchers Society
60th Annual
Gem, Mineral and Jewelry Show

Brookhurst Community Center
2271 W. Crescent Ave, Anaheim, CA

Free

Saturday, May 4th, 2019 / hours 10am - 5pm
Sunday, May 5th, 2019 / hours 10am - 4:30pm
www.searchersrocks.org

Gratis

The poster features several images of gemstones and minerals, including a red and white striped gem, a green and white striped gem, a purple and white striped gem, a green and white striped gem, and a purple and white striped gem.

Upcoming 2019 CFMS Gem Shows

For a more complete listing of shows go to web-site:

www.cfmsinc.org

MAY

May 3, 4, 5 & 6: YUCAIPA, CA
Yucaipa Valley Gem & Mineral Society
Yucaipa Music & Arts Festival
Yucaipa Blvd and Adams Street
Hours: Fri 6 pm-10 pm; Sat 12 noon-10 pm; Sun 12 noon-6 pm
Contact: Chuck Barlick, (813) 767-6718
Email: res09ayd@verizon.net
Website: yvgms.org

May 4 - 5: JACKSON, CA
Amador County Gem & Mineral Society
Kennedy Mine
12594 Kennedy Mine Rd (off Hwys 49/88)
Hours: 10 - 4 daily
Contact: Gaylene Lichty, (916) 698-9853
Email: mountaingirl@volcano.net
Website: amadorgemandmineral.org

May 4 - 5: ANAHEIM, CA
Searchers Gem & Mineral Society
Brookhurst Community Center
2271 W. Crescent Avenue
Hours: Sat 10 - 5; Sun 10 - 4:30
Contact: Margaret Hogarth, (909) 815-3045
Email: hogarth.m@gmail.com
Website: searchersrocks.org

JUNE

June 7, 8 & 9: LA HABRA, CA
North Orange County Gem & Mineral Society
La Habra Community Center
101 W. La Habra Blvd.
Hours: Fri 5 - 8; Sat 10 - 8 & Sun 10 - 4
Contact: Armando Perdoza, (909) 598-2456
Email: forestandsun@yahoo.com
Website: www.nocgms.com

June 8 - 9: GLENDORA, CA
Glendora Gems
Goddard Middle School
859 E. Sierra Madre Avenue
Hours: Sat 10 - 5; Sun 10 - 4
Contact: Bonnie Bidwell, (626) 963-4638
Email: ybidwell2@aol.com

June 29 - 30: CULVER CITY, CA
Culver City Rock & Mineral Club
Veterans Memorial Auditorium
4117 Overland Blvd
Hours: Sat 10 - 6; Sun 10 - 5
Contact: Janice Metz, (310) 850-4398
Email: culvercityrocks35@gmail.com
Website: culvercityrocks.org [Show Page](#)

June 29 - 30: ESCONDIDO, CA
Palomar Gem & Mineral Club
California Center for the Arts
340 N. Escondido Blvd.
Hours: 10 - 5 daily
Contact: Michele Shephard
Email: pgmcshow@palomargem.org
Website: palomargem.org [Show Page](#)

AUGUST

August 2, 3 & 4: NIPOMO, CA
Orcutt Mineral Society
Nipomo High School
525 Thompson Avenue
Hours: Fri-Sat 10 - 5, Sun 10 - 4
Contact: Wayne Mills, (805) 481-3495
Email: wwmills50@hotmail.com
Website: omsinc.org

August 3 - 4: SAN FRANCISCO, CA
San Francisco Gem & Mineral Society
San Francisco County Fair Building
9th Avenue & Lincoln Way, Golden Gate Park, S.F. County Fair Bldg.
Hours: Sat. 10 - 6; Sun. 10 - 5
Contact: Ellen Nott
Email: ellel_nott@yahoo.com
Website: sfgms.org

SEPTEMBER

September 21: LONG BEACH, CA
Long Beach Mineral & Gem Society
Expo Arts Center
4321 Atlantic Avenue
Hours: 10:00 - 5:00
Contact: Carol Kron and Karin Alvarez, (562) 577-9044
Email: lbgmsociety@gmail.com

September 21 - 22: CHICO, CA
Feather River Lapidary & Mineral Society
Silver Dollar Fairgrounds
2357 Fair Street
Hours: Sat 9:30 - 5; Sun 9:30 - 4
Lori Millard, (530) 533-2968
Email: lorimillard58@yahoo.com
Website: www.featherriverrocks.org

September 21 - 22: MONTEREY, CA
Carmel Valley Gem & Mineral Society
Monterey Fairgrounds
2004 Fairgrounds Road
Hours: 10 - 5 daily
Contact: Janis Rovetti, (831) 372-1311
Email: janis12@sbcglobal.net
Website: cvgms.rocks

September 28 - 29: LODI, CA
Stockton Lapidary & Mineral Club
Lodi Grape Festival Grounds
413 East Lockford Street
Hours: 10 - 5 daily
Contact: Mike Mathis, (510) 301-3612
Email: mmathis@nwp.org
Website: stocktonlapidary.org [Show Page](#)

OCTOBER

October 5 - 6: GRASS VALLEY, CA
Nevada County Gem & Mineral Society
Nevada County Fairgrounds
11228 McCourtney Road
Hours: Sat 10 - 5, Sun 10 - 4
Contact: Mitchell Frank Van Hecke, (530) 575-4252
Email: 4vanclan5@att.net
Website: ncgms.org [Show Page](#)

May Birthstone: Emerald



Searchers Gem & Mineral Society

General Information



Check our website for unexpected changes in schedule!

www.searchersrocks.org

General Meetings: 7 PM, 2nd Tuesday of each month, Jan - Nov

Board Meetings: 6PM, 1st Tuesday of each month, Jan - Nov

Workshop: Thursday 5:30 to 9:30 PM and Saturday 2:30 to 6:30 PM

Location: Anaheim Downtown Community Center
250 East Center St.
Anaheim, CA 92805

Mailing Address: Searchers Gem & Mineral Society, Inc.
P.O Box 3492
Anaheim, CA 92803

Website: www.searchersrocks.org

Membership Dues:	Individual	\$25
	Couple	\$35
	Junior (17 & under)	\$10

Valid Jan.1-Dec.31, not prorated

Bulletin: Submissions due 3rd Friday of the month via e-mail to: editor@searchersrocks.org.

Bulletin distributed 1st week of each month. Mail exchange bulletins to the editor:

Searchers —Linda Horn Editor

P.O. Pox 3492

Anaheim, Ca. 92803

Charter Date: April 20, 1958

Affiliations: California Federation of Mineralogical Societies
American Federation of Mineralogical Societies



THE GEMSTONE TOURMALINE

Tourmaline is the most colorful of all gemstones. It occurs in all colors, but pink, red, green, blue and multicolored are its most well-known gem colors. Scientifically, tourmaline is not a single mineral, but a group of minerals related in their physical and chemical properties. The mineral Elbaite is the member of the Tourmaline group that is responsible for almost all the gem varieties. Three other members of the group - Schorl, Dravite and Liddicoatite, are seldom used as gemstones.

ALL ABOUT

Though Elbaite occurs in all color forms, the term Elbaite in the gemstone trade is sometimes used to describe the green form of Tourmaline. The other color forms of Elbaite have their own variety names on the gem market. Traditional Tourmaline gemstone variety names include Rubellite, the red or pink variety, Indicolite, the blue variety, and Watermelon Tourmaline, a multicolored Tourmaline of green and red. More recently coined Tourmaline variety names include Chrome Tourmaline and Paraiba Tourmaline. A recent trend in the gem market is to prefix Tourmaline gemstones by the color designation as opposed to variety name, such that "Rubellite" is now more often called "Red Tourmaline".

The value of Tourmaline has a very large range. The more common forms can be fairly inexpensive, but the rarer and more exotic colors can command very high prices.

The most expensive and valuable form of Tourmaline is the rare neon-blue form known by the trade name Paraiba Tourmaline. Paraiba Tourmaline was first discovered in a gem pegmatite in the Brazilian state of Paraiba in 1989. This new Tourmaline became extremely popular in a very short time, and the cost for this rare Tourmaline became astronomically high due to short supply. Small deposits of Tourmaline of similar color to Paraiba Tourmaline were also recently found in Nigeria and Mozambique, and these are often also called "Paraiba Tourmaline" in the gem trade. Other valuable forms of Tourmaline are Chrome Tourmaline, an intense-green Tourmaline found in Tanzania, Rubellite, the pink to red variety, and Indicolite, the rare blue variety.

Multicolored stones are truly a gemological wonder, as their beauty and uniqueness are unparalleled. An interesting form of multicolored tourmaline, adequately called Watermelon Tourmaline, has a red center surrounded by a green outer layer (or vice versa). When used as a gem, Watermelon Tourmaline is green on one side and red on the other. Schorl, a common black Tourmaline, is fairly inexpensive.

All colored Tourmaline gems display pleochroism, meaning their color changes when viewed at different angles. In some Tourmaline gems, this effect is hardly noticeable, while in others it is strongly apparent. Gemstone cutters must take this into account when cutting a Tourmaline, so that the finished gem brings out its best color.

USES

Tourmaline of all colors are faceted into gems for jewelry, but the red, green, blue, and multicolored stones, especially watermelon, are the most popular. Tourmaline can be found in fairly large transparent crystals, and these can produce very large exquisite and flawless gemstones. Tourmaline is used as a large pendant stone, in bracelets, rings, and earrings. Lesser quality stones are cut into cabochons, and are also polished into beads and used in bracelets and necklaces. Pink and green Tourmalines from certain localities contain tiny, parallel inclusions, causing them to display a strong cat's eye effect when polished. Such stones are often cut as cabochons and called "Cats' Eye Tourmaline". Some pink, green, and multicolored Tourmalines are also carved into ornamental figures and carvings.

From: <https://geology.com/minerals/tourmaline.shtml>



THE NEVADA MINERAL & BOOK COMPANY

<http://minbooks.net/>

342 S. Tustin Street • Orange, CA 92866

Ph. 714-633-1549

