

July 2012 - Volume 48 Issue 7

In This Issue

BIRTHSTONES
FIELD TRIPS
CFMS EVENTS
PIC-NIC

Searchers Board Officers

President: Tery Lynn Wheeler

1st VP: Veronica Purura

2nd VP: Tracey Jackson

Director: Norbert Bernhardt

Secretary: Suzanne Alsky

Treasurer: Jay Erb

Federation Delegate:

Kim Campbell

Committee Chairpersons

Anaheim Arts Council:

Beth Pelfrey

Editor: Yery Camacho

Historian: Beth Pelfrey

Hospitality: Lorri Renck

Library

Membership: Beth Pelfrey

Monthly Drawing:

Skip and Connie Cone

2011 Show Chair

Robert Burson

Show Co-Chair

Beth Pelfrey

Sunshine

Veteran's Coordinator:

Larry Richey

Website: Gary Grayson

Workshop: Adrian Callard

Rock's Kids:

Terri Benedict

THE PRESIDENT'S MESSAGE

Hello Searchers!

We're well into the summer, and I hope all our members are enjoying a wonderful season. The club has several upcoming events that are sure to be fun for the whole family. Keep reading here in your slab to find out more information on the Searchers Annual Picnic in August, an upcoming one day local fieldtrip, and more.

Enjoy a wonderful 4th of July celebration with family and friends. Remember to take time this holiday to honor those who have served and are currently serving our country to assure we all have the freedoms we so richly enjoy!

Tery-Lynn Wheeler

JULY BIRTHSTONE

Ruby

A ruby is a pink to blood-red colored gemstone, a variety of the mineral corundum (aluminum oxide). The red color is caused mainly by the presence of the element chromium. Its name comes from ruber, Latin for red. Other varieties of gem-quality corundum are called sapphires. The ruby is considered one of the four precious stones, together with the sapphire, the emerald, and the diamond.

Prices of rubies are primarily determined by color. The brightest and most valuable "red" called pigeon blood-red, commands a huge premium over other rubies of similar quality. After color follows clarity: similar to diamonds, a clear stone will command a premium, but a ruby without any needle-like rutile inclusions may indicate that the stone has been treated. Cut and carat (weight) are also an important factor in determining the price.

Records and Famous Rubies

The Smithsonian's National Museum of Natural History in Washington, D.C. has received one of the world's largest and finest ruby gemstones. The 23.1 carats (4.6 g) Burmese ruby, set in a platinum ring with diamonds, was donated by businessman and philanthropist Peter Buck in memory of his late wife Carmen Lúcia. This gemstone displays a richly saturated red color combined with an exceptional transparency. The finely proportioned cut provides vivid red reflections.

The stone was mined from the Mogok region of Burma (now Myanmar) in the 1930s.

In 2007 the London jeweler Garrard & Co featured on their website a heart-shaped 40.63-carat ruby.

On December 13/14, 2011 Elizabeth Taylor's complete jewelry collection was auctioned by Christie's. Several ruby-set pieces were included in the sale, notably a ring set with an 8.24 ct gem that broke the 'price-per-carat' record for rubies (\$512,925 per carat, i.e. over \$4.2 million in total), and a necklace that sold for over \$3.7 million.



Ruby from Winza, Tanzania

GENERAL INFORMATION

General Meetings: 7 PM, 2nd Tuesday of each month, Jan - Nov

Board Meetings: 7PM, 3rd Tuesday of each month, Jan - Nov

Workshop: Thursday, 6 - 10 PM, free wire-wrap class, Saturday, 3 - 7 PM

Free silver-smithing class 1st, 2nd, 3rd Saturdays (schedule varies)

Location: Anaheim Downtown Community Center, 250 East Center St, Anaheim, CA 92805

Mailing Address: Searchers Gem & Mineral Society, Inc, P.O. Box 3492, Anaheim, CA 92803

Membership Dues: Individual- \$25, Couples- \$35, Junior (17 & under)- \$10

Valid Jan.1-Dec.31, not prorated

Bulletin: Submissions due 3rd Friday of the month via e-mail to: editor@searchersrocks.org.

Bulletin distributed 1st week of each month. Mail exchange bulletins to the editor:

Yery Camacho, 13900 Studebaker Rd, #4, Norwalk, CA 90650

Charter Date: April 20, 1958

Affiliations: California Federation of Mineralogical Societies

American Federation of Mineralogical Societies

Sponsored by: Anaheim Arts Council

Web Site: www.searchersrocks.org

FIELD TRIPS

FIELD TRIPS 2012			
Date	Leader	Location & Material	Status
July 14		Corona Fossil Beds	Cancelled!
September 1-3		Burro Creek, Arizona	planned
November TBD		Buffington Pockets in Nevada	planned

For a more complete listing of shows go to website: www.cfmsinc.org
 Also see www.motherlodemineralsociety.com/events.html.

Other websites of interest:www.firemountaingems.comwww.southsunproducts.comwww.pioneergem.comwww.route66goldminers.orgwww.auctionmasters.com**CLUB MEETING ACTIVITY SCHEDULE 2012**

Date	Presenter	Subject
August 11	Searcher's Potluck	Jim McGeough's Home; 7890 Bedford Motor Way, Corona, CA 92883
November 13	Cabinet member elections and pie party	
December 1	Christmas/End of Year Banquet	Marie Calendars, 6p

Take a Note--July 14th. Trip Cancelled

Corona Fossil Beds

I am sorry to say that the field trip this Saturday, July 14th to Corona Fossil Beds has to be cancelled due to health reasons. We will be rescheduling the trip as soon as we can. An email will be sent out as soon as a new date is set.

Tracy

2012 Searcher's Potluck/ Picnic**Jim McGeough's Home; 7890 Bedford Motor Way, Corona, CA 92883****August 11 from 11am to 3pm**

Greetings Searchers! It's that time again for the annual potluck event coming next month. The club will be cooking hot dogs and members will be providing the rest food potluck style. Sign up sheets with categories of what to bring will be available during monthly meetings and upcoming special emails. Please volunteer to bring food or equipment for this event. Jim McGeough has kindly offered us his expansive yard to host our picnic event. There will also be games and other fun activities (such is a rock and mineral ID game, horse shoes, 60 second games, and more)! Please RSVP so that the club can prepare more efficiently. For more information, please contact the Vice President, Veronica Purpura, at angeldragonoflight@yahoo.com. **Fill and send sign-up sheet, go to page 7**

UPCOMING 2012 CFMS GEM SHOWS**July 13 – 15: RIVERSIDE, CA CFMS****GOLD AND GEM SHOW & CONVENTION****Hosted by Valley Prospectors**Riverside Municipal Auditorium
3485 Mission Inn Avenue

Hours: Fri & Sat 10 – 5; Sun 10 – 4

Contact: Steve Schubert, Show Chair,
(951) 943-0535Email: meschubert@hotmail.com**August 3 - 5: NIPOMO, CA**

Orcutt Mineral Society

Nipomo High School

525 North Thompson Ave.

Hours: 10 - 5 daily

Contact: Wes Lingerfelt, (805) 929-
3788Website: www.omsinc.org**August 4 - 5: SAN FRANCISCO, CA**

San Francisco Gem & Mineral Society

Building 1, Treasure Island

1 Avenue of the Palms

Hours: Sat 10 - 6; Sun 10 - 5

Contact: Ellen Nott

Email: ellen_nott@yahoo.com**August 31 - September 3: FORT BRAGG, CA**Mendocino Coast Gem & Mineral
SocietyTown Hall, Corner of Main & Laurel
Street

Hours: Fri-Sun 10 - 6; Mon 10 - 4

Jerry Sommer, (707) 937-1833

September 8 - 9: DOWNEY, CA

Delvers Gem & Mineral Society

Woman's Club of Downey

9813 Paramount Blvd.

Hours: 10 - 5 daily

Contact: Jon Fults, (714) 856-7548,
(714) 287-5743 cellEmail: jhfults@verizon.net**September 15 - 16: BORON, CA**

Mojave Mineralogical Society

Boron Community Park & Building

27177 – 20 Mule Team Road

Hours: 8 – 4 daily

Contacts: Steve Breckenridge (760)

559-0872, Rock5b@starband.net

David Eyre, (760) 762-6861,

david_eyre@mail.com**September 15 - 16: PASO ROBLES, CA**

Santa Lucia Rockhounds

Pioneer Park & Museum

2010 Riverside Avenue

Hours: 9 - 5 daily

Contact: Dale Conrad, (805) 226-0719

Website: www.slrockhounds.org**September 15 - 16: REDWOOD CITY, CA**

Sequoia Gem & Mineral Society

Community Activities Building

1400 Roosevelt Avenue

Hours: 10 - 5 daily

Contact: Mary Lou Froese, (650) 755-
8753Email: mfroese@sbcglobal.netWebsite: <http://sgms.driftmine.com>**September 21 - 23: SAN BERNARDINO, CA**

Orange Belt Mineralogical Society

Western Regional Little League Ball
Park

6707 Little League Drive

Hours: 9 am to Dusk daily

Contacts: Frank Gerny, (909) 381 0089

Bigfoot999@ca.rr.com

Steve Williams, (909) 389-8680

ironelk@ymail.com

Website:

<http://OBMSrocks.yolasite.com>**September 22 - 23: CHICO, CA**Feather River Lapidary & Mineral
Society

Silver Dollar Fairgrounds

2357 Fair Street

Hours: Sat 10 - 5; Sun 10 - 4

John Scott, (530) 321-6331

Email: jweazel@sbcglobal.netWebsite: www.orovillerocks.com

September 29 - 30: MONTEREY, CA

Carmel Valley Gem & Mineral Society
Monterey Fairgrounds
2004 Fairgrounds Road
Hours: Sat 10 - 6; Sun 10 - 5
Contact: Janis Rovetti, (831) 372-1311,
cell (831) 521-8226
Email: janis12@sbcglobal.net
Website: www.cvgms.org

September 29 - 30: SANTA ROSA, CA

Santa Rosa Mineral & Gem Society
Wells Fargo Center for the Art
50 Mark West Springs Road
Hours: Sat 10 - 6: Sun 10 - 5

Jolene Coon, (707) 849-9551

Email: coons@sonic.net

Website: www.srmgs.org

September 29 - 30: STOCKTON, CA

Stockton Lapidary & Mineral Club
Scottish Rite Masonic Center
33 W. Alpine Avenue
Hours: 10 - 5 daily
Contact: Dorothy Tonnacliff (209) 603-
4539 or Jan Bradley (209) 629-3878
Email: slmshow@juno.com
Website: www.stocktonlapidary.com

ANAHEIM ARTS COUNCIL MEETING REPORT

On Thursday, the Anaheim Arts Council met for the last time before going dark for the summer. The next meeting will be the first Thursday in September.

The meeting was held at the Sunkist Library in Anaheim, and a tour of the Children's room and the new art that was donated.

The grants and scholarships were awarded. The American Opal Society received a grant that enables them to put on their wonderful annual show. They also provided the FABULOUS refreshment: spicy chicken wing, cookies, fruit and I don't know what all.

Carol Latham chaired her last meeting of the AAC as President. Over the summer they will elect a new one from their board. Carol has signed the contract for OUR show at the Brookhurst Community Center next year, so once again, thanks to the generous backing of the AAC, we will be able to dazzle our community once again.

The AAC and Anaheim have a full social calendar for the summer. Please go to the website to find picnics in the park, concerts and movies in Pearson Park, plays, workshops and more: <http://www.anaheimartscouncil.com/index.php> If you have trouble following this link, type "Anaheim Arts Council" into google and you can get there.

I will have flyers at the meetings for AAC and other activities for you and your families.

Beth Pelfrey, Arts Council Representative

CFMS REPORT

by Kim Campbell Erb

The BLM Desert District is redoing the West Mojave ("WEMO") Route Plan. This covers many important areas like the Cady Mountains, Lavic Siding, the Calico Mountains, the El Paso Mountains, Johnson Valley, Rand and Johannesburg areas and more. We all enjoy collecting widely over those areas, so this will be important. The public comment period for the scoping has expired, but the BLM's Desert Advisory Council (to which I was appointed a seat in December) has created a subgroup which is collecting information regarding routes that are important to the public. Even old routes that are no

longer open are on the table at this time. They need to hear from as many of us as rockhounds as possible! They need to receive information regarding specific routes (this can be from old maps), including the collecting areas and what we collect there, so that they can show support for keeping them open or reopening them. If possible, copy an old map showing the route, preferable one that is generally recognized such as a AAA map or a USGS map. They need to know who is requesting it also. Here is a link to the announcement: <http://www.blm.gov/ca/st/en/info/rac/dac/wmrnp.html> It would be great to attend the meetings, but it is more important to submit your request in writing.

****Meeting Dates:** Meetings are held at the BLM's field office in Barstow from 5:00 to 8:00 p.m. on the following dates:

July 10

August 14

September 11

October 9

November 13

Next, the Desert Renewable Energy Conservation Plan (DRECP) is a huge program being processed jointly by the BLM and the State of California to identify public land that is preferred for alternative energy projects and land to be used as mitigation for disturbing biologically sensitive areas to build those projects. They are going to take thousands and thousands of acres of our public lands away to build wind, solar and geothermal projects. The BLM needs to know what areas are important to us to preserve access to so they can try to avoid building on them or excluding us from them. They are currently in the scoping period. The size of this is mind-boggling, but we must tackle it and respond if we care about our collecting areas! Here is a link to the site: <http://www.drecp.org/> Again, we need as many people as we can find to attend meetings, review documents and write comment letters,

The Solar Energy Development PEIS is similar to the DRECP, but covers solar only but on 7 southwestern states. This one is further along, but by no means completed yet. Yes, again, we need as many people as we can find to attend meetings, review documents and write comment letters. Here is a link to more information: <http://solareis.anl.gov/>

There are many alternative energy projects already in the works that should also be studied and commented on. Please the BLM website regularly to review these and see if there are any rockhound locations within the geographical areas affected, to share that information with others, and to write comment letters prior to the public comment period deadlines for those projects. New projects are added frequently, so it is a good idea to keep checking the BLM's website for newly proposed projects. Here is the link: http://www.blm.gov/ca/st/en/fo/cdd/alternative_energy.html

WE ARE COMPILING INFORMATION REGARDING COLLECTING AREAS (OLD FIELD TRIP REPORTS, BOOKS, MAGAZINE ARTICLES ... ANYTHING!) AND WORKING TO IDENTIFY THE ROUTES USED TO ACCESS THEM IN AN EFFORT TO PROTECT THEM. WE WOULD APPRECIATE WHATEVER INFORMATION OF THIS NATURE CAN BE PROVIDED! Please contact Kim Campbell Erb at campbellsrocks@yahoo.com if you have information that should be included.

Kind regards,

Kim Campbell Erb

Rockhound Activist, Searchers' Director and Representative to the CFMS

2012 NATIONAL VETERANS ARTS CONTEST WINNERS

by Larry Richey

The Veterans Creative Arts Contest is an annual contest open to all Patients from the Veterans Hospitals worldwide. Each hospital has its own contest and the 1st place winners from that contest, move up to the Regional Level, than the 1st place winners move up to the National level. There are thousands of entries from all over the world. Just to go to the National level is a huge achievement, but to win one of the top three places is an unbelievable achievement one can be quite proud of.

The National Veterans Creative Arts Festival (NVCAF) is the celebration and grand finale stage and art show which are the culmination of talent competitions in art, creative writing, dance, drama and music for the veterans treated in the Department of Veterans Affairs (VA) National Health Care System. Approximately 130 veterans will exhibit their artwork or perform in a gala show. All 1st place winners are selected to participate at the end of this long contest. This year's Gala Performance and Art Exhibit will be at year in Boston Massachusetts. Veterans Health Care System of the VA medical facilities incorporate creative arts into their recreation therapy programs. This annual competition recognizes the progress and recovery made through that therapy, and raises the visibility of the creative achievements of our nation's veterans after disease, disability or life crisis.

This year we want to congratulate the winner of this competition from Long Beach.

Jewelry Category 1st Place: Jesus Garza- Hopi Pride Project.

All the projects this year really stepped up in Quality and it is too bad we are not allowed to send more than one per category. This is a tuff competition with 1880 some 1st place winners trying to get to the nationals in the final 23 categories all that entered should be VERY PROUD of your projects.

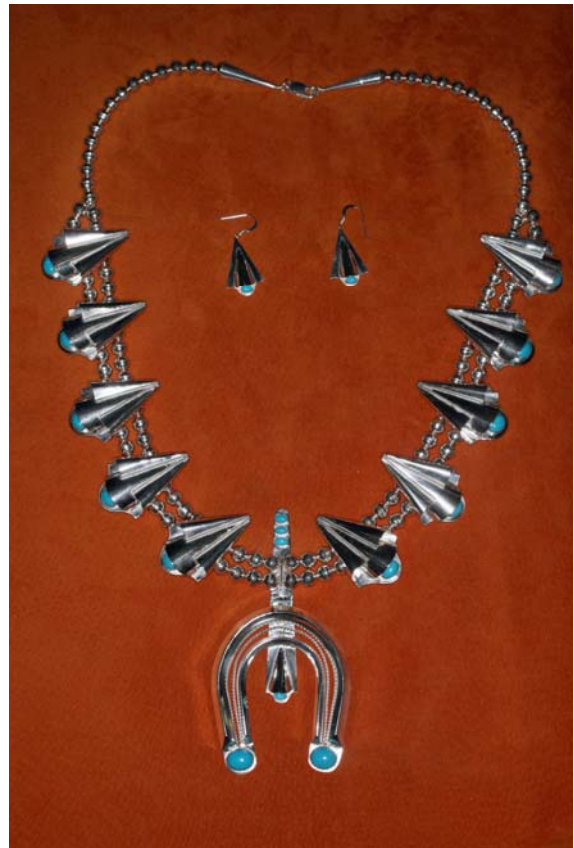
We would like to congratulate Jesse! This was the only project from any of the clinics at Long Beach this year! Great Job! I know Jessie is already planning his 2013 project.

For all of our Supporters:

VA medical Center (VRT) this has been a life changing experience. We want to thank you for your support. Your support for our Long Beach program is the only reason this program is still available to these veterans today. Without your support this program would not exist to day as it is the only one of the two Lapidary class in the VA System. With your support Long Beach has won nineteen (18) of the top three places and one (1) Special Recognition award at the nationals over the last twenty one years. We thank you for all that you do to support this program at Long Beach.

We THANK YOU AND SALUTE YOU ALL!

Larry Richey



Searcher's Potluck-Picnic Sign-Up Sheets

Please sign your name and what you'll be bringing
The Searcher's will provide sodas and water
e-mail it to: angeldragonoflight@yahoo.com

Name: _____

Plates, Napkins, Flatware, Cups, Bowls, etc...

- 1. _____
- 2. _____
- 3. _____

Hot Dogs and Other Main Dishes (along with Condiments like Ketchup, Mustard, Relish, etc...)

- 4. _____
- 5. _____
- 6. _____

Side Dishes, Snacks, Chips, Salad, etc...

- 7. _____
- 8. _____
- 9. _____

Desserts

- 10. _____
- 11. _____
- 12. _____

Extra Tables, Chairs, Charcoal, Lighter Fluid, Aluminum Foil, Cooking & BBQ Tools & Utensils; Paper Towels; Ice; Serving Dishes or Utensils, and etc...

- 13. _____
- 14. _____

Games & Supplies

- 15. _____
- 16. _____
- 17. _____

BENCH TIPS

by Brad Smith

groups.yahoo.com/group/BenchTips/ or facebook.com/BenchTips

Sometimes you need to find the right balance point to place a bail on a pendant or a loop on an earring so that the piece hangs straight. I use some tweezers that I modified to suspend the pendant or earring between two sharp points, allowing it to swing. Any old set of tweezers will do. Spread the tips, sharpen them with a file, and bend the tips at a right angle to point towards each other.

PtCreations

2812-B Walnut Ave.

Tustin, Ca 92780 714-904-2181

Classes, jewelry, faceted stones, rocks, slabs and minerals.
Now open Wednesdays 11am-4pm and during classes and events.
Check the "Calendar" on our web-site for schedule.

www.ptcreations.net

THE NEVADA MINERAL & BOOK COMPANY

<http://minbooks.net/>

342 S. Tustin Street • Orange, CA 92866

Ph. 714-633-1549

Rusty's Gold & Treasure Hunting Supply

Club members show your ID card and receive a 10% off purchases over \$100

Authorized dealer for Garrett, Fisher, and Tesoro metal detectors

5642 E. La Palma Ave., #208, Anaheim, CA 92807 (corner of La Palma and Imperial Hwy.)

714 693-GOLD (4653). Store hours: Tu - Sat 10am - 6pm