

SEARCHERS BOARD OFFICERS

- President: Heather Jaeckels
- 1st VP: Veronica Purura
- 2nd VP: Robert Burson
- Director: Jay Erb
- Secretary: Jamie Cassidy-Curtis
- Treasurer: Charlotte Spalding
- Federation Delegate: Kim Campbell Erb
- Committee Chairpersons
- Anaheim Arts Council: John O'Connor
- Editor: Linda Horn
- Historian: Beth Pelfrey
- Hospitality:
- Library Membership: Beth Pelfrey
- Monthly Drawing:
- Sunshine:
- Veteran's Coordinator:
- Website:
- Workshop: Adrian Callard
- Rock "N" Kids: Norbert Bernhardt

IN THIS ISSUE

Field Trips	2
Club Meetings	3
Upcoming CFM Shows	4

POINTS OF INTEREST

FIELD TRIPS

GENERAL MEETING

SPEAKERS

The Rock Slab News

The Searchers Gem & Mineral Society, Anaheim CA

VOLUME 54, ISSUE 10



OCTOBER 2017

The President's Message

Hello Searchers and Friends!



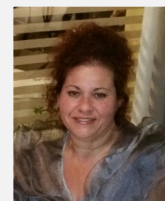
LET'S "ROCK" THE GIFTS! At the Searcher's Holiday Boutique

Join in on the Fall fun at our Holiday Boutique! Spread the word to your friends and family. Everyone is welcome! This October The Searchers will be changing up our regular monthly meeting by showcasing the work of our talented members. Jewelry, cabochons, polished stone spheres, beautiful display rocks & minerals, rough stone, belt buckles and bolo ties will be featured as well as some surprises! It will be a great opportunity to snap up dazzling Christmas presents, Holiday gifts and décor, as well as raw materials for that special someone. Maybe yourself, wink!

Date: Tuesday, October 10th 7pm to 10pm See Page 5 for more details

We will have our bake sale table and add another Searchers table to sell rough and slabs. All those proceeds will go to the club to fund ongoing club activities, so please be generous!

We need members to bring all sorts of goodies for sale and volunteer to man the tables. To participate as a volunteer or vendor, please contact me or a board member.



Please remember to bring a rock or slab for the Veterans!

Heather Jaeckels 2017 President, Searchers Gem and Mineral Society

Do you love America? And Pie?

Get ready for some pie and Democracy because club elections are coming up!
Please indulge me in a personal note to membership...

I love working with The Searchers. I have found it very rewarding and have felt warmth and fellowship that is truly heartwarming. I don't know if I can express how much being a part of this group with you has meant to me and how much I have learned. The world can be a harsh, unkind place and there have been days when this club, more specifically the people in this club, have been the only thing that got me up in the morning. In the midst of criticism and crisis there are some truly good people who lent an ear or shoulder, and got me through tough times. These are people who pitched in and volunteered and helped shoulder the weight of the work. You good people are one reason I've kept faith in people and determination to hold on during challenging moments. Please know how valued and loved you are.

Having said that, I hate to have to say that it's time for someone new to step in as president. Hopefully some new blood with fresh eyes and ideas will take the club to new heights. I plan to stick around as the liaison to our Vets and certainly pester everyone to keep up the good work supporting our Vets at The Long Beach Veterans Hospital. I ask you to lend your support to our new president and even consider throwing your hat in the ring.

If you're interested in becoming president or participating in another capacity please contact Steve Duncan. Steve will be our contact person for nominations. Steve can be reached by email at wsd@iteris.com, or by phone at 714.724.7102.

Field Trips

DATE	LEADER	LOCATION	STATUS
10/14-15/2017	Joe Goetz	Searles Lake– Trona	Planned
10/27-29/2017	Robert Burson	Arizona (Holbrook area)	Planned

Field Trip: Arizona Petrified Wood October 27-29

For field trip

information

contact: Robert

Burson V.P. Field

Trips, Searchers

Gem and Mineral

Society,

bursonrocks@veriz

on.net

October field trip is to Concho (Holbrook) area. There have been many inquiries from several folks to revisit this area. The result of the previous visits have made others desire equal opportunity to collect here. This time we will look a new spot on private property. One bucket is the limit and one big piece is encouraged. If this works out we could be given a future permission to allow the Searchers an exclusive spot. Our camp spot is in Concho which is on a 44 acre private ranch, once again a exclusive honor. Please be extra conscientious to Frank and Nancy for this consideration. BBQ lunch will be served on Saturday at the Dobell Ranch. For those interested in the warmth of a motel there are many motels in Holbrook and some in Springerville, AZ. Friday will be a self-guided trip to the Painted desert/Petrified forest. Some scouting could be also a choice. **Friday, October 27** start time 8:00am, meet at roadside in front of the Denny's (Navaho Blvd). Directions: On Saturday and Sunday we will meet at the camp (Hwy 180 southeast out of Holbrook). Turn on county road 5270 and follow signs to camp.



Saturday a trip to Dobell Ranch. You may have all the Petrified Wood you can purchase. There is some excellent top grade wood here. CASH only, don't forget this. A couple of other stops will include Gray's Petrified Wood store and a lapidary factory in Springerville. Saturday night a ride to Holbrook to a restaurant, probably Mexican food. For those who wish to stay in camp a shared potluck is an option.

Sunday itinerary to petroglyphs, a walk to an ancient canyon and a spot to collect petrified wood.

Directions from Los Angeles: East on 91 fwy to the 15 North towards Barstow to the 40 East. From my house in Cerritos it is approximately a 9 hour drive, 558 miles. Firewood will be appreciated. Suggested supplies: water, food, protective clothing, gloves, heavy coat, perhaps rain gear, tools for digging. Room rates in Holbrook vary. There are some very reasonable rooms on the southwest part of the town on Navajo Blvd. The roads on the north eastern are much better quality.

Pasadena Lapidary Society Field Trip to Searles Lake

October 14th & 15th, 2017

If you have never experienced the Searles Lake Show at Trona you have missed some real fun! Because of that we have designated October's field trip to be to this special event. This year's annual GEM-O-RAMA by the Searles Lake Gem & Mineral Society will held be on October 14 – 15, Saturday 7:30AM to 5PM - Sunday 7:30AM to 4PM at the Lapidary and Show Building - 13337 Main St. (corner of Main & Trona Rd) in Trona, CA.



FIELD TRIPS: The field trips out to Searles Dry Lake are the best part of the show. Plan to attend both days trips. Registration is at the show from 7:30-9:00 am and 1:30-2:30 pm - you must register during these times to go on field trips

Mud Trip - Saturday - 9AM (2½ hrs)- Cluster & barrel hanksite, trona, borax - \$15 per car. Blow

Hole - Saturday - 2:30PM (2½ hrs) - Hanksite, halite, borax, sulfahalite - \$15 per car.

Pink Halite - Sunday - Departure 9AM (4½ hrs) - In brine, beneath hard salt - \$20 per car.

Searles Valley Minerals & Plants Tour - Saturday only: 10:40, 11:25, 12:10, 12:55 and 1:40 - in bus - FREE

Pinnacles Natural Landmark - Self guided, information at show - FREE



TOOLS: Saturday collecting trips - 3-tined cultivator to dig through mud, small brush to wash mud crystals, brine to wash crystals, bucket to hold what you find, carpet square to kneel or sit on (optional), gloves to protect hands (optional). All these items can be purchased at the show.

Sunday trip - rock pick to chop off small specimens, heavy steel bar with blade for large specimens, bucket to hold what you find (boxes work well too), gloves to protect hands, carpet square to kneel or sit on (optional).

Important: for either collecting trip bring a hat, water, sunscreen, a complete change of clothes, clean wash water, towels or rags.

AT THE SHOW: Searles Lake Pink Halite at wholesale prices, 20+ dealers, 50 exhibits, geode cutting and sales, demonstrations, games, gem dig, free parking, snacks & drinks, grand prize, drawing, hourly door prizes, food, pancake breakfast at Trona Community Church (2 blocks north of show) at 6AM, Museum opens daily at 9AM.

Look at the times and events and go at your own pace. Try to attend as many of the field trips as you can and enjoy the show in between. For more show information visit their web site at www1.iwwisp.com/tronagemclub or call Jim or Bonnie Fairchild at (760) 372-5356.

ACCOMMODATIONS: Valley Wells Recreation Area - 5.3 miles north of show, \$8/vehicle (dry camp, no reservation). Motels and stores in Ridgecrest - See Pasadena Lapidary website: http://www.pasadenalapidarysociety.org/files/Searles_Lake_Trip_Information_2017.pdf

Call me at (626) 914-5030 if I can answer any questions. Joe Goetz Field Trip Chairman

CAMPING

The SLG&MS invites you to camp at the Valley Wells Recreation Area of Searles Valley Minerals, Inc. while attending the Gem-O-Rama. Although it is dry camping, there are restroom and portable toilets, fresh water at 3 faucets, an outdoor shower to wash the salt and mud off after field trips, and a trash receptacle. There are also tennis courts. And you will be camping with several hundred other enthusiastic mineral collectors. All this for just \$8 per night. Registration will either be as you drive in or someone will stop by your camp. Valley Wells is located about 5.3 miles north of the show building. Follow the "Show Camping" signs north on the main road (this road continues on to Death Valley) until you see a sign pointing down a paved road to the right (east). Turn at this corner and drive the last 1/4 mile to Valley Wells. During the day, Valley Wells is noticeable because of the large collection of trees at the site, the only trees in the area. At night, you will see the large collection of yellow, sodium vapor lights.

Bertrand RV Park Phone (760) 377-4000

Desert Empire Fair - 520 South Richmond Road Ridgecrest, CA. 93555.

Tel: (760) 375-8000. Fax: (760) 375-8134

Camping in the open desert: Allowed by the BLM.



Club Meeting Activity

DATE	PRESENTER	SUBJECT
10-10-2017	None	Holiday Boutique
11-14-2017	None	Pie Party and Cabinet Member Elections
12-2-2017	None	Christmas Party

For a more complete listing of shows go to web-site:

www.cfmsinc.org

Upcoming 2017 CFMS Gem Shows

OCTOBER

October 7 - 8: BORON, CA

Mojave Mineralogical Society
Boron Community Center
26998 John Street
Hours: 9 - 4 daily
Contact: Bruce Davies, (760) 338-8829
Email: daviesb@yahoo.com
Web Site: [Facebook page](https://www.facebook.com/boroncommunitycenter)

October 7 - 8: GRASS VALLEY, CA

Nevada County Gem & Mineral Society
Nevada County Fairgrounds
11228 McCourtney Road
Hours: 10 - 5 daily
Contact: Anita Wald-Tuttle, (530) 277-6195
Email: anitaw1t3@gmail.com
Website: www.ncgms.org

October 8: FALLBROOK, CA

Fallbrook Gem & Mineral Society
Fallbrook Gem & Mineral Building
123 West Alvarado Street
Hours: 9 - 4
Contact: Janice Bricker, (760) 728-1130
Email: fgms@sbcglobal.net
Website: www.fgms.org

October 14 - 15: TRONA, CA

Searles Lake Gem & Mineral Society
Gem Show Building
13337 Main Street
Hours: Sat 7:30 - 5; Sun 7:30 - 4
Contact: Jim & Bonnie Fairchild, (760) 372-5356
Email: slgms@iwwisp.com
Website: www1.iwwisp.com/tronagemclub [Show Flyer/Details](#)

October 21: WEST HILLS, CA

Woodland Hills Rock Chippers
First United Methodist Church
22700 Sherman Way
Hours: 10 - 5
Contact: Virginia Rotramel, (951) 403-2634

Email: ginigem1@gmail.com

Website: www.rockchippers.org [Show Page](#)

October 21 - 22: PLACERVILLE, CA

El Dorado County Mineral & Gem Society
El Dorado County Fairgrounds
100 Placerville Drive
Hours: 10 - 5 daily
Contact: (530) 676-2472
Email: info@rockandgemshow.org
Club Website: www.eldoradorocks.org [Show Page](#)

October 21 - 22: SANTA ROSA, CA

Santa Rosa Mineral & Gem Society
The Veterans Memorial [\(new date & location\)](#)
1351 Maple Avenue
Hours: Sat 10 - 6; Sun 10 - 5
Contact: Jolene Coon
Email: santarosarockshow@hotmail.com
Website: www.srmgs.org

October 28 - 29: LOS ALTOS, CA

Peninsula Gem & Geology Society
Los Altos Youth Center
One North San Antonio Road
Hours: 10 - 5 daily
Contact: Steve Jobe, (408) 834-5384
Email: steve_job@sbcglobal.net
Website: www.pggs.org [Show Page](#)

October 28 - 29: SACRAMENTO, CA

Sacramento Mineral Society
Scottish Rite Temple
6151 H Street
Hours: 10 - 5 daily
Contact: Alyssa Mesiznger, (916) 662-5819
Email: gem-show@sacramentomineralsociety.org
Web Site: <http://sacramentomineralsociety.org> [Show Page](#)

NOVEMBER

November 3, 4 & 5: EUREKA, CA

Humboldt Gem & Mineral Society
Redwood Acres Fairgrounds
3750 Harris Street
Hours: Fri 9 - 6; Sat 9 - 6; Sun 10 - 5
Contact: Toni L Tyson, (707) 502-9574
email: bluiis911@msn.com

November 4 - 5: ANAHEIM, CA

American Opal Society
Business Expo Center
1960 S. Anaheim Way
Hours: Sat 10 - 6; Sun 10 - 5
Contact: Veronica Purpura, (714) 501-9959
Email: info@opalsociety.org
Website: www.opalsociety.org [Show Page](#)

November 4 - 5: CONCORD, CA

Contra Costa Mineral & Gem Society
Centre Concord
5298 Clayton Road
Hours: 10 - 5 daily
Contact: Mary Hicks, (925) 779-0698
Email: maryhicks@comcast.net
Website: (Temp. under construction) [Show Coupon](#)

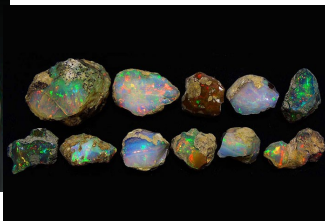
November 4 - 5: RIDGECREST, CA

Indian Wells Gem & Mineral Society
Desert Empire Fairgrounds
520 South Richmond Road
Hours: 9 - 5 daily
Contact: John DeRosa, (760) 375-7905
Email: jfrocks@dslexreme.com

November 11 - 12: YUBA CITY, CA

Sutter Buttes Gem & Mineral Society
Yuba-Sutter Fairgrounds - Franklin Hall
442 Franklin Avenue
Hours: Sat 10 - 5; Sun 10 - 4
Contact: Karen Horita, (530) (916) 677-6696
Email: horita@comcast.net
Website: www.sutterbuttes.net

October Birthstone: Opal & Tourmaline



It is Boutique Time Again

Searcher's

Gem & Mineral Society

October 10 - 6 to 9 PM



Our first Holiday Boutique was a smash hit! Since it was so very well received, this October we will again be holding a Holiday Boutique in place of our October meeting. We will showcase the work of our talented members including: jewelry, lapidary, holiday gifts, décor, and a variety of other artfully crafted items.

This will be a wonderful event for outreach and fundraising. We will be ramping up that outreach to rally bigger crowds, in order to support our member vendors and increase club interest.

Due to the great response we've doubled the size of the event space and hope to accommodate all members who wish to participate. Please contact a board member with thoughts or suggestions. To participate as a volunteer or vendor, please contact me directly or use the "table request" here in the newsletter.

Contact: Heather Jaeckels Cell: 310.686.8145
mail: hkjaeckels@gmail.com

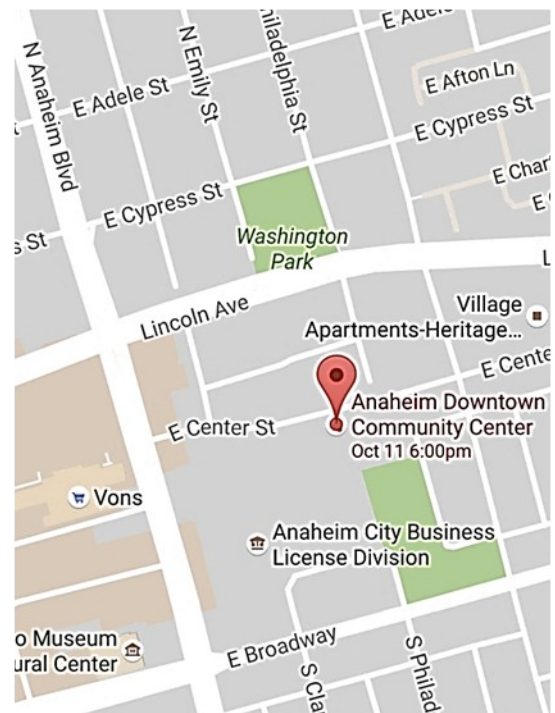
Date: Tuesday, October 10th

Time: 6pm to 9pm

Location: Downtown Anaheim Community Center,
Assembly Hall

250 East Center Street, Anaheim, CA
92805

Parking: Free in Community Center lot



The Mineral Halite

Halite, the natural form of salt, is a very common and well-known mineral. It is found in solid masses, and as a dissolved solution in the oceans and in salt lakes. The inland lakes that are rich in salt exist in arid regions, and may also be below sea level without an outlet. These lakes evaporate during dry seasons, causing a recession in the water level and an increase of salinity content. When this happens, salt forms on the evaporated shores of the



lake. This also happens as the tributaries of salt lakes are diverted for human and agricultural use, causing the lake to dry up with additional salt forming at the evaporating shoreline. Many of these inland lakes have already dried up, leaving over enormous salt deposits which may be commercially mined.

Halite also exists in non-arid regions, in underground deposits which can reach great depths. Underground Halite deposits are often mined by drilling wells into the salt layer, and bringing in hot water which quickly dissolves the salt into a brine. The brine is saturated with dissolved salt and is then pumped out. The brine evaporates and the remainder salt crystallizes and is harvested. Most commercially available Rock Salt is regrown from evaporated salt brine and is not the original natural crystals. Halite also forms from evaporation at salt springs where saline water comes out of the ground in a salt deposit and precipitates as rounded globular masses.

In some underground salt deposits such as Texas and Louisiana, salt is pushed upwards by an underground force through soft ground and forms arched structures known as salt domes. These deposits are also important sources of salt mining operations and are very unique geological formations.

Although the color range of Halite can be caused by impurities, the deep blue and violet colors are actually caused by defects within the crystal lattice, and the pink and peach colors of many dry lake Halite specimens are caused by bacteria from various algae.

Artificial Halite can easily be grown as crystals by allowing a saturated saltwater solution to evaporate. Hopper-shaped cubes may result as the brine evaporates and the crystal grows. A few Halite specimens on the market are actually artificially grown crystals formed in this manner.



From Minerals. Net <http://www.minerals.net/mineral/halite.aspx>

Club Announcement:

Santa Ana Rock and Mineral Club is having a silent auction on Wednesday , Oct 18, 2017 at 7pm It will take place during the normal club meeting at the:

Green Valley Homowners' Recreation Building
10739 Los Jardines West
Fountain Valley, CA 92708

Searchers Gem & Mineral Society

General Information



Check our website for unexpected changes in schedule!

www.searchersrocks.org

General Meetings: 7 PM, 2nd Tuesday of each month, Jan - Nov

Board Meetings: 6PM, 1st Tuesday of each month, Jan - Nov

Workshop: Thursday, 6 – 10 PM, free wire-wrap class.

Saturday, 3 – 7 PM Free silver-smithing class 1st, 2nd, 3rd Saturdays (schedule varies).

Location: Anaheim Downtown Community Center
250 East Center St.
Anaheim, CA 92805

Mailing Address: Searchers Gem & Mineral Society, Inc.
P.O Box 3492
Anaheim, CA 92803

Website: www.searchersrocks.org

Membership Dues:	Individual	\$25
	Couple	\$35
	Junior (17 & under)	\$10

Valid Jan.1-Dec.31, not prorated

Bulletin: Submissions due 3rd Friday of the month via e-mail to: editor@searchersrocks.org.

Bulletin distributed 1st week of each month. Mail exchange bulletins to the editor:

Searchers —Linda Horn Editor

P.O. Pox 3492

Anaheim, Ca. 92803

Charter Date: April 20, 1958

Affiliations: California Federation of Mineralogical Societies



PtCreations

2812-B Walnut Ave.
Tustin, Ca 92780 714-904-2181
www.ptcreations.net

THE NEVADA MINERAL & BOOK COMPANY

<http://minbooks.net/>

342 S. Tustin Street • Orange, CA 92866
Ph. 714-633-1549



The Agateer Lapidary Supply

www.theagateer.com

(657) 464-0400

Licensed Dealer

Saws, Diamond Saw Blades – Cutting Oil – Dressing Sticks
Cabbing Machines – Diamond Wheels – Dop Supplies
Tumble-Bee Tumblers, Grit Kits, Tumbling Media

Free Delivery within Orange County for orders over \$150



15131 Triton Lane #117
Huntington Beach, CA 92649
714-893-6643
www.sccgemology.org